

## **ADDENDUM NO. 1**

### **TO THE PROJECT MANUAL:**

**HALLSVILLE ISD BOBCAT STADIUM PARKING LOT EXPANSION**

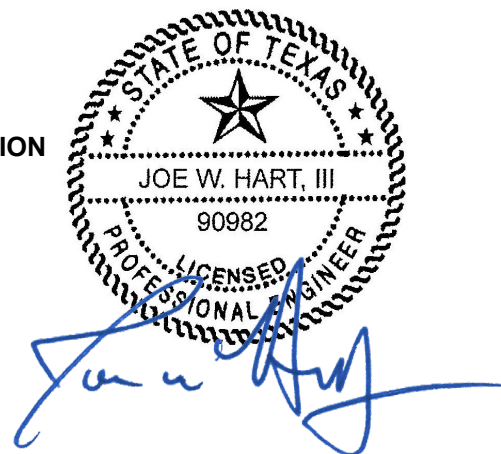
### **PROJECT BID DATE:**

**TUESDAY, OCTOBER 07, 2025, 2:00 P.M.**

### **ADDENDUM DATE:**

**TUESDAY, SEPTEMBER 30, 2025.**

**For additional information regarding this project, contact  
Bradley Phelps, Project Coordinator @ (903) 753-0663**



### **NOTICE TO BIDDERS:**

This Addendum shall be considered part of the contract documents for the above-mentioned project as though it had been issued at the same time and incorporated integrally therewith. Where provisions of the following supplementary data differ from those of the original contract documents, this Addendum shall govern and take precedence.

Bidders are hereby notified that they shall make any necessary adjustments in their estimate on account of this Addendum. It will be construed that each Bidder's proposal is submitted with full knowledge of all modifications and supplemental data specified herein. Acknowledge receipt of this addendum in the space provided on the proposal form. Failure to do so may subject Proposer to disqualification.

Revised drawings are being issued with this Addendum No. 1.

### **REFERENCE IS MADE TO THE DRAWINGS AND THE PROJECT MANUAL AS NOTED:**

**Addendum No.1, Item 1: To the drawings, Sheet C6.2 has been added to the plan set.**

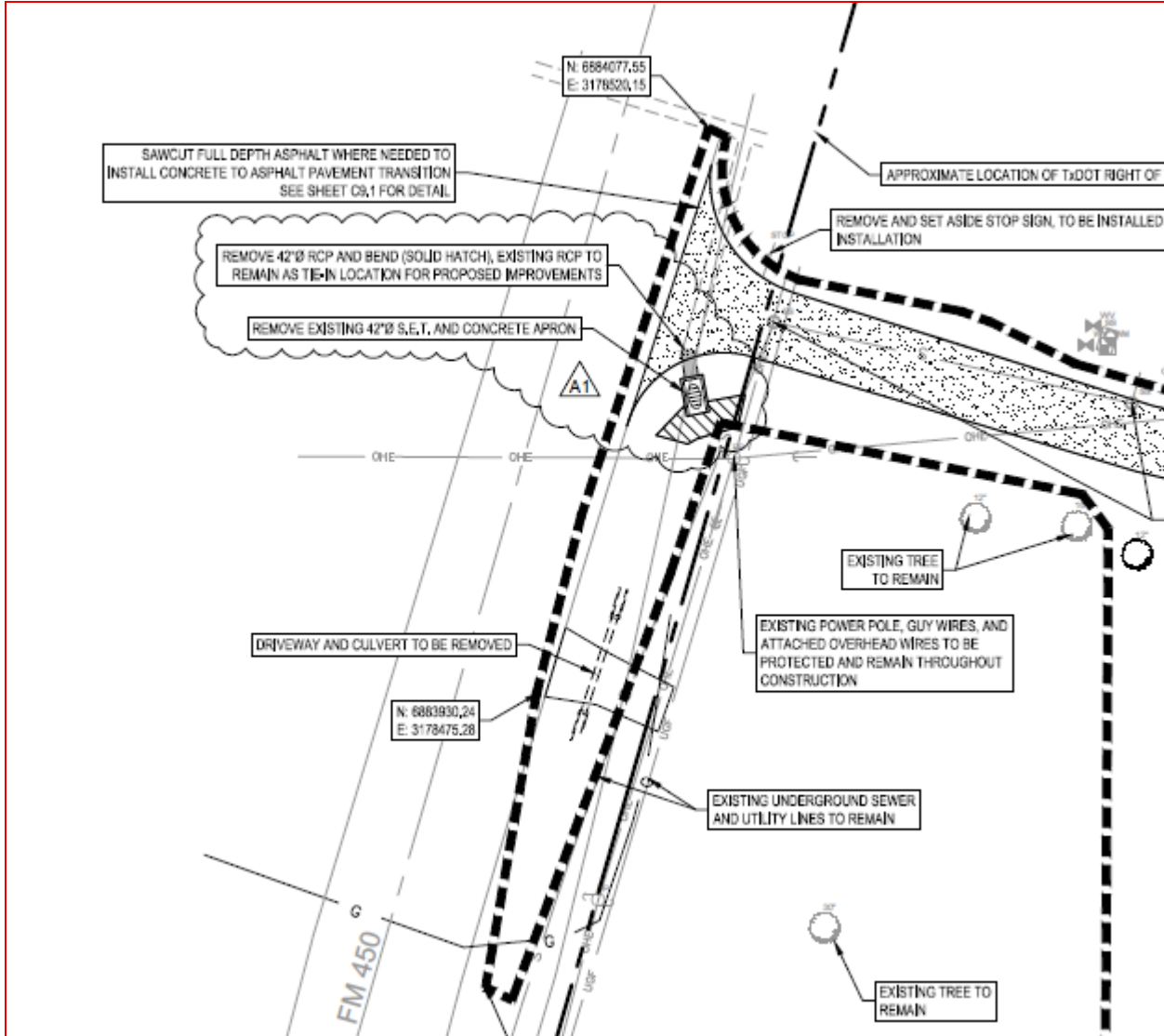
**Addendum No.1, Item 2: Additional Information to Clarify the Project Manual and Drawings**  
THE FOLLOWING QUESTIONS WERE RECEIVED FROM PROSPECTIVE BIDDERS ON THIS PROJECT:

- 1. QUESTION:** Please clarify what Line Item #20 on the bid form is to include. Is this lime stabilization?  
**RESPONSE:** There is no lime stabilization on this project. Item 20 is the compaction and moisture conditioning of the 8" subgrade, in advance of forming and placing the concrete pavement.
- 2. QUESTION:** The demolition sheet only calls for the removal of RCP Pipe. The existing conditions appear to be a concrete end section and a concrete flume in this area. The new site plan calls for an area inlet to go back at this location. Standard practice would be to connect to the existing RCP with new RCP, extend the pipe run, and daylight to a new SET. C3.0 Demolition Plan - Existing Drive

Entrance C4.0 Site Plan - New Drive Entrance C4.0 - N Callout Please confirm the required scope of work to be priced at the new driveway crossing.

**RESPONSE:** Sheet C6.2 has been added to the plan set. We inadvertently left out the plan sheet in the original plan set. In summary, the scope of work includes removing the existing concrete S.E.T. and concrete rip rap, removing a portion of the 42" RCP and 45 deg bend, connecting to the end of the pipe with new 42" RCP, constructing a concrete collar and installing 45-ft of 42" RCP and a 5'x5' area inlet with one opening on the south side of the inlet.

**NOTE:** *The concrete collar connection for the 42" RCP is subsidiary to Pay Item 39.*



*Pay Item 51 has been added to the bid sheets to capture the cost of "Demolish & Remove 42" SET, 42" RCP, 45 Degree Bend, & Concrete Rip Rap per plans and specifications".*

3. **QUESTION:** Please clarify if the steel bollards are galvanized or not.

**RESPONSE:** No, Galvanizing the steel pipes will not be required. See revised bollard detail at end.

4. **QUESTION:** 1. On sheet C8.1 SJ & DSJ are shown. No expansion joints are shown. Are we to assume that the DSJ is to be a redwood expansion joint w/ dowels as shown on the detail? 2. Is widening saw cuts from 1/8" to 1/4" required? There is a detail that shows widening, but it also states "If Required" It would save the school money if 1/8" saw cuts are acceptable. 3. Is the use of Sika SL-1 acceptable for joint sealant?

**RESPONSE:**

- 1) There are no expansion Joints on this project.
- 2) Yes, widening the joints to 1/4" is required

3) No, DOW 888 is the only approved sealant to this project.

5. **QUESTION:** 1. Just to confirm Bollards are to be galvanized and painted. A special primer will have to be used to paint the galvanized bollards. 2. Will we be required to cover concrete testing for the job? 3. Will we have to coordinate with AEP for the removal of the power poles and lines? If so, is there a cost? Will the new power be run prior to relocation? Is there any expected outages? If so, is there a certain timeframe it can be down?

**RESPONSE:**

- 1) Galvanization of the pipe bollards is not required. See revised detail.
- 2) Concrete Testing will be paid for by the owner.
- 3) A. Yes, contractor to coordinate and schedule the removal of the power poles and lines  
B. Any cost associated with the power line removal will be deducted from the miscellaneous construction allowance. We do not expect there to be any costs for this.  
C. Power will be from the existing pad mounted transformer to the new control panel.  
D. Power to the transformer will be temporarily shut off (by AEP) in order to make the connection inside the transformer. Coordination with the owner and AEP will be required for this connection.

6. **QUESTION:** Are CAD files available for estimating take-offs?

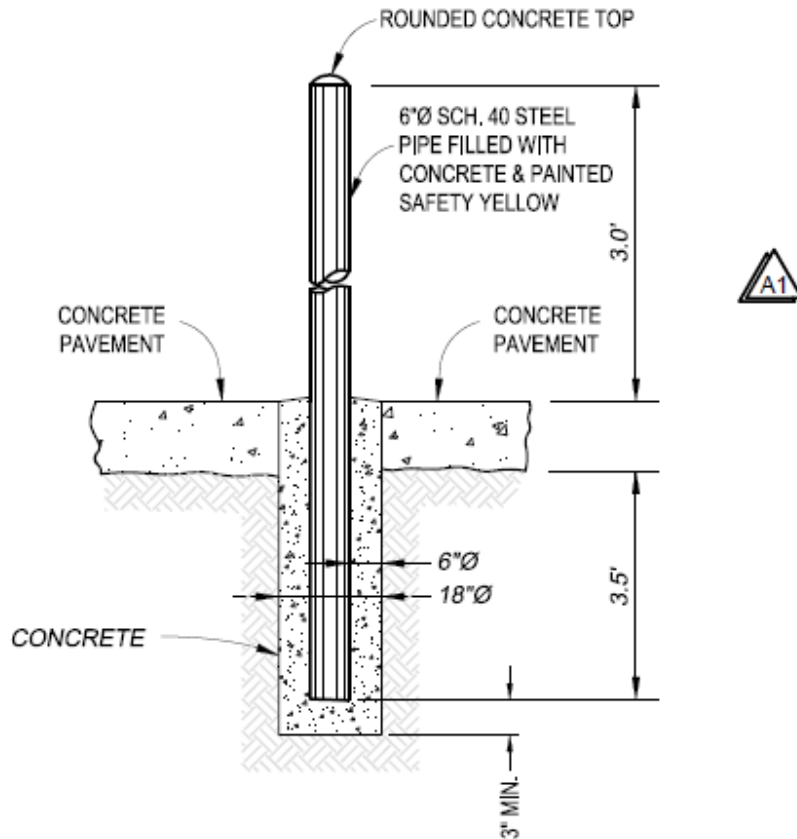
**RESPONSE:** CAD drawings will be provided to the awarded contractor. Project quantities have been provided on the bid sheets.

7. **QUESTION:** Who pays for testing (dirt, compaction, concrete, etc)? Owner or Contractor?

**RESPONSE:** The owner will hire and pay for the testing.

8. **QUESTION:** Please clarify if there is any subgrade stabilization to be included in the project? (Lime, concrete, fly ash, etc). The spec states as indicated on drawings, but none shown. The GeoTech is ambiguous as to whether it is required or not.

**RESPONSE:** There is no subgrade stabilization on this project. Also refer to pavement section for subgrade compaction and moisture requirements.



**BOLLARD FINISH NOTES:**

1. PROVIDE 6 INCH DIAMETER SCHEDULE 40 BLACK STEEL PIPE, FILLED WITH CONCRETE AS SHOWN ON THE DRAWINGS.
2. PREPARE EXTERIOR STEEL SURFACES BY REMOVING ALL MILL SCALE, RUST, AND CONTAMINANTS IN ACCORDANCE WITH SSPC-SP6 (COMMERCIAL BLAST CLEANING) OR EQUIVALENT.
3. APPLY ONE COAT OF HIGH-BUILD EPOXY PRIMER WITH A MINIMUM DRY FILM THICKNESS (DFT) OF 4.0 MILS.
4. APPLY TWO COATS OF ALIPHATIC POLYURETHANE (SAFETY YELLOW) WITH A TOTAL DFT OF 6.0 MILS MINIMUM (3.0 MILS PER COAT).
5. PROVIDE A TOTAL PAINT SYSTEM DFT OF NOT LESS THAN 10.0 MILS.
6. FINAL COLOR SHALL BE SAFETY YELLOW, OSHA #13655 (OR EQUAL).
7. TOUCH UP ALL FIELD WELDS, ABRASIONS, OR DAMAGE TO COATINGS WITH EPOXY PRIMER AND POLYURETHANE TOPCOAT TO RESTORE FULL PROTECTION.

## 6" PIPE BOLLARD DETAIL

N.T.S.

ITEM	QTY	UNIT	BID ITEM DESCRIPTION WITH UNIT PRICES IN WORDS	UNIT PRICE	TOTAL PRICE
50	2	EA	Waterline Adjustment at Storm Sewer Crossing (if Needed) per plans and specifications at a unit price of: _____ dollars & _____ cents	\$ _____ - _____	\$ _____ - _____
51 ADD #1	1	LS	Demolish & Remove 42" SET, 42" RCP, 45 Degree Bend, & Concrete Rip Rap per plans and specifications at a unit price of: _____ dollars & _____ cents	\$ _____ - _____	\$ _____ - _____

BID TOTAL \$ \_\_\_\_\_

\_\_\_\_\_  
Contractor Signature                      Company Name                      Date

Page 7 of 8  
Addendum No.1  
**END OF ADDENDUM #1**